

"PPF9"



**Positive Pressure Whole House
Ventilation Unit**

for Small, Medium or Large Domestic Properties

**Installation, Operating and Maintenance
Instructions**



CE



"PPF9" - POSITIVE PRESSURE WHOLE HOUSE VENTILATION UNIT INSTALLATION, OPERATING & MAINTENANCE INSTRUCTIONS (SEE ADDITIONAL INSTRUCTIONS AT END FOR MODELS WITH HEATER)

Safety Notice

It is important to read this Instruction Manual carefully before installing or using the product. Following these instructions will ensure that your ventilation system is installed, commissioned and used properly and continues to operate effectively. Vectaire will not be held responsible and will not accept liability for any damage caused to persons or property through failure to follow the guidance provided in this manual. It should always be available with the product for easy reference.

General Information

The Vectaire PPF9 positive pressure fan works on the principle of introducing tempered air drawn in through the loft, creating a positive pressure in the building, which then dissipates through openings around the property to provide a constant background air change. As the moisture content of the air outside is normally lower than that indoors, the level of humidity is reduced, helping to eliminate the damaging effects of condensation.

The tempered, filtered fresh air is introduced via a short length of flexible ducting attached to a stylish, ceiling-mounted valve. This discreet valve gently supplies the air in a circular direction, providing effective, draught-free ventilation. The system automatically provides a fresh, tempered airflow into the home with minimal power consumption.

The system is designed to run continuously and should NOT be switched off except for maintenance or filter replacement. It is important to follow the advice in this user manual and correctly install and maintain the system to ensure a healthy and comfortable indoor environment.

Installation

IT IS IMPORTANT THESE INSTRUCTIONS ARE READ FULLY BEFORE INSTALLATION

- This product should not be used for any purpose other than that for which it was designed and as shown in this leaflet.
- All packaging should be removed and the unit checked for damage in transit. If there is any damage, please contact your supplier.
- Packing material should not be left within the reach of children or unskilled people and any hazardous parts must be disposed of responsibly (polystyrene, plastic, polypropylene, etc.).
- **In order to comply with Construction (Design & Management) Regulations, sufficient access for safe maintenance, or removal following installation, MUST be provided for this product.**
- **Fire Safety Regulations and current Building Regulations.** In order to comply with these, it may be necessary to fit fire dampers or other similar devices.
- The unit must **NOT** be installed:
 - where there is excessive oil or grease
 - where there are hazardous gases, liquids or vapours that are flammable or corrosive
 - in ambient temperatures above 40°C
 - where it could be exposed to outside elements - rain, sun, snow etc
- Where possible the unit should **NOT** be installed directly above a bedroom or living room.
- Care should be taken to ensure that ducting is free from blockages
- The product must be connected to the electricity supply via a double pole isolating switch located in the proximity of the fan.
- The product should only be connected to the mains electricity supply or electrical outlet if:
 - your electrical voltage and frequency correspond to those shown on the rating label.
 - the capacity of your electricity supply is sufficiently powerful to operate the product at its maximum power.

Installation of the appliance **MUST** be carried out by a qualified and suitably competent person and should be carried out in clean, dry conditions where dust and humidity are at minimal levels. The unit is not suitable for installation on the exterior of the dwelling.

Handling

- Care should be taken when transporting the unit. Dropping or knocking will damage the inner workings of the unit.
- The unit should always be stored in a clean, dry environment.
- Remove all packaging before installation.

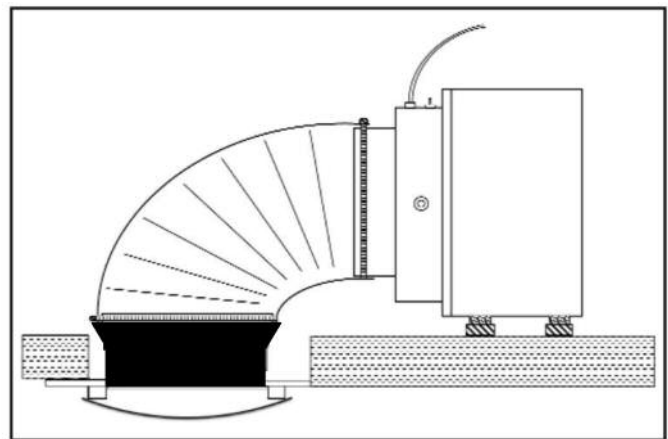
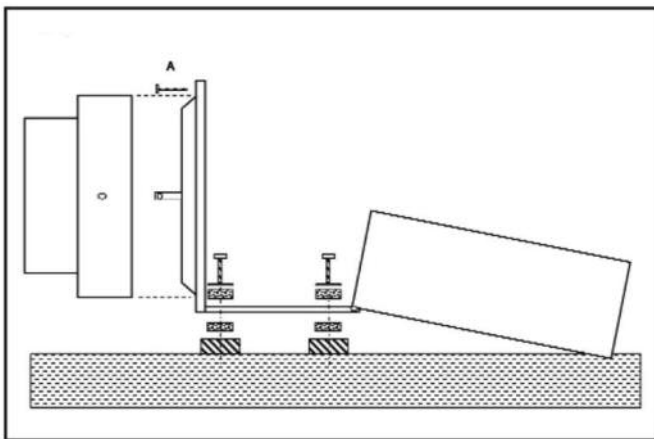
Pre-inspection

- Inspect the unit and electrical supply cord for any damage (damage must be repaired by a suitably qualified and competent person).
- Check all parts are supplied as shown.

Parts list

- 1 x Vectaire PPF9 fan unit
- 1 x Filter Box
- 1 x Ceiling Valve
- Flexible Duct and Worm Drive Clips
- Plaster Board Fixings and Screws
- Attenuation Mounts
- Installation, Operation & Maintenance Instructions

Any parts shortages or faults must be reported to the supplier immediately.



Installation - for loft mounting

1. To fix the filter box, firstly remove screw 'A' and open the box as shown. Attach the box to two wooden battens fixed between the trusses using the screws, washers and rubber mounts supplied. Close the box and secure with screw 'A'.
2. Attach the fan section to the filter box using the two screws and plastic washers located in the protruding tabs on the filter box.
3. Attach the ducting to the fan unit, using worm drive clips. (Use the minimum length of ducting necessary and cut off any excess.)
4. Attach the black reducer to ducting, using worm drive clips.
5. Cut a circular hole in the ceiling (approx. 205mm dia).
6. Separate the front section of the valve from the ceiling plate and fix the plate to the ceiling with the spigot protruding through the hole.
7. Push the valve into the ceiling plate.
8. Fix the reducer onto the valve ceiling plate.
9. Connect to power supply and adjust the fan speed setting to the desired level

Wiring Instructions (for fan without heater)

Connect the fitted supply cable to a local isolating switch.

Cleaning and Maintenance

Before any maintenance or cleaning operation, disconnect the appliance from the mains power supply.

Maintenance should only be carried out by properly qualified personnel.

The fan blades should be periodically checked and cleaned as necessary, usually after every six months of continuous operation. Use a soft brush to remove any accumulation of dust on the blades.

During the normal cleaning operations, check the integrity of all appliance parts.

The filters can be cleaned using the soft brush attachment of a vacuum cleaner.

Note: the filters should be replaced every two years. Replacements are available from Vectaire Ltd.



ADDITIONAL INSTRUCTIONS FOR MODELS WITH DUCT HEATER

Important

- This heater is intended solely for use with the PPF9 loft-mounted unit. It must be installed by a suitably qualified person.
- These instructions must be read in conjunction with the fitting instructions for the fan unit.
- The heater unit is supplied pre-wired to a surface-mounted thermostat. The thermostat should be mounted on a suitable surface close to the unit.

Heater Unit Installation Instructions

1. Choose a suitable position within the loft where the heater can be mounted on the same level as the fan section.
2. Fit the heater over the fan outlet spigot with an overlap of approximately 30-40mm. Secure the two sections together with four screws through the pre-drilled holes in the heater spigot. [The heating element must be at the furthest end from the fan.]
3. Fix the heater to the mounting surface by screwing through the heater feet.
4. Mount the thermostat close to the fan unit, preferably against a vertical surface. Do not position above any source of heat such as ceiling light fittings, etc.
5. Remove the fixing screws from the connection box and lift off the cover.
6. Slacken off the locking nut on the spare cable gland on the end of the connector box and feed through the fan connecting cable. Connect the two wires to the fan terminals as shown in the wiring diagram. Re-tighten the cable gland.
7. Replace the connection box cover.
8. Connect the mains cable supplied to a local isolating switch. If a fused spur is used, it should be fused at 3 amps.

Important: This product must be earthed.

9. Turn on the power and ensure that the fan is operating.

Important: The heater must never be operated without the fan connected and running.

10. Select the required fan speed [factory supplied at setting no. 1] and set the thermostat temperature at the required level. [**Note:** the higher the temperature selected, the longer the heater will operate.]

The temperature rises are:

- Speed 1 - 11.5°C
- Speed 2 - 7.5°C
- Speed 3 - 7.2°C

11. Connect the ducting to the outlet spigot of the heater and secure with a worm-drive clip.

Note: In the event that the fan is not running and power is connected to the heater, a thermal cut-out located inside the connector box will operate, preventing any overheating. Should this happen, the cause of the fan failure must be rectified. To allow the heater to be re-used, the thermal cut-out must be manually re-set.

